

The Mason and Dixon Line Preservation Partnership

For more information, call: 484-706-1281 * or email: masdix@gmail.com

On **Saturday May 21, 2016** at **10:00 a.m.** the **Mason and Dixon Line Preservation Partnership** will unveil a new **Crown Stone** at Mile 40 on the Mason and Dixon Line. The original stone set by Mason and Dixon in November 1766 was destroyed and thought to have been **lost forever**. After a bit of detective work, calculations, surveying, and following in the footsteps of Mason and Dixon, the base of the **original stone was discovered**.

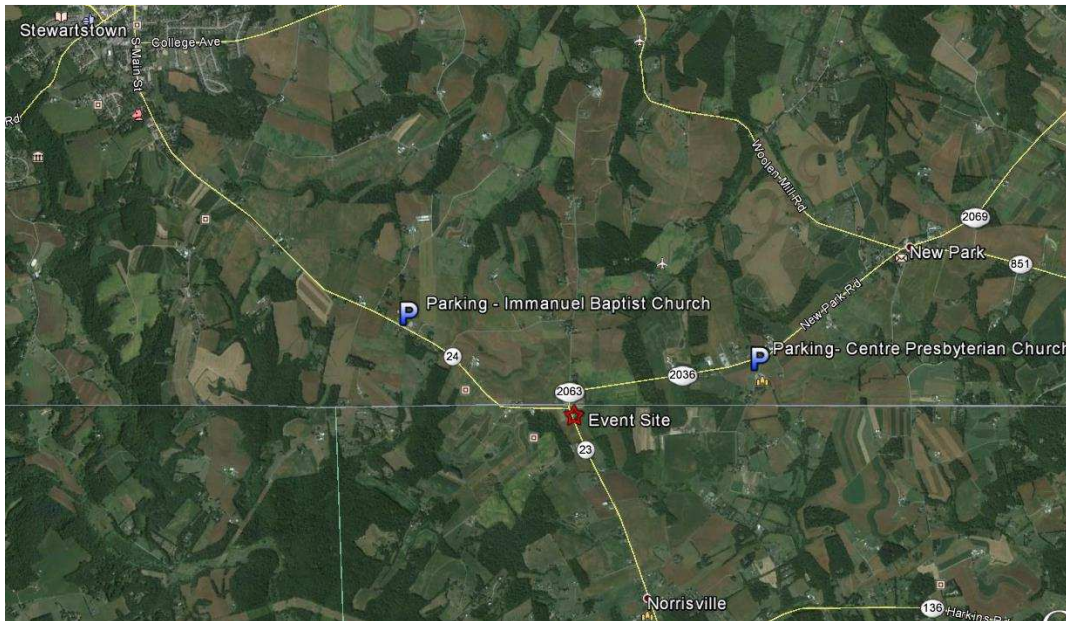
Now, 250 years after being set by Mason and Dixon, a **New Indiana Limestone replica** was set adjacent to the original base uncovered by the Partnership.

Join us on May 21st for the unveiling.

At the State line at PA State Route 24 / Maryland Route 23

Parking Sites & Shuttle available

Latitude/Longitude: [39.721001](#), [-76.543333](#)



During the Re-survey of 1901-03, the top was discovered to have been broken off and the base was found still in place. Owing to the “adverse attitude of the owner of the ground, it was not thought expedient to replace the monument in the same position”. A replacement stone was set approximately 150 feet to the west of the original and in the 1950’s that stone was also broken off. The top of that stone now resides in the York County Historical Society.

In 2012, Jim Poole contacted Todd Babcock, a Pennsylvania surveyor with the Mason and Dixon Line Preservation Partnership, about his interest in locating the position of the original stone. Todd and Pat Simon, a Maryland surveyor with the Mason and Dixon Line Preservation Partnership, studied the field notes of Mason and Dixon as well as a 1902 re-survey performed by the U.S. Coast and Geodetic Survey and calculated the location where the stone should be. Pat Simon then performed a field survey to mark the location where the stone would have been located. A shovel excavation was made and the base of the original stone was found 1.5 feet west of the computed location.

A Special thanks to the following for their financial contributions toward the purchase of this stone

*Baltimore Chapter Maryland Society Surveyors
Jim Poole
PSLS South Central Chapter
Highland Survey Associates, Inc.
Lorna Hainesworth
Patrick Simon
James Shaw
Steven Lamphear
James Grammer
Mason and Dixon Line Preservation Partnership*

Limited parking available at the event site

Public parking available at:

**Centre Presbyterian Church
83 New Park Road New
Park, PA 17352**

OR

**Immanuel Baptist Church
21133 Barrens Road S
Stewartstown, PA 17363**

Follow the signs to additional parking at the nearby church lots. There will be **free** shuttle buses to provide transportation between the lots and the Crown Stone event.

Please do not park at the Royal Farm store across the street from the Crown Stone. They are helping with the event and need the lot open for any customers.

The bus shuttle will start at 9:00 AM.

Arrive early to allow time to get to the site before the start of the event